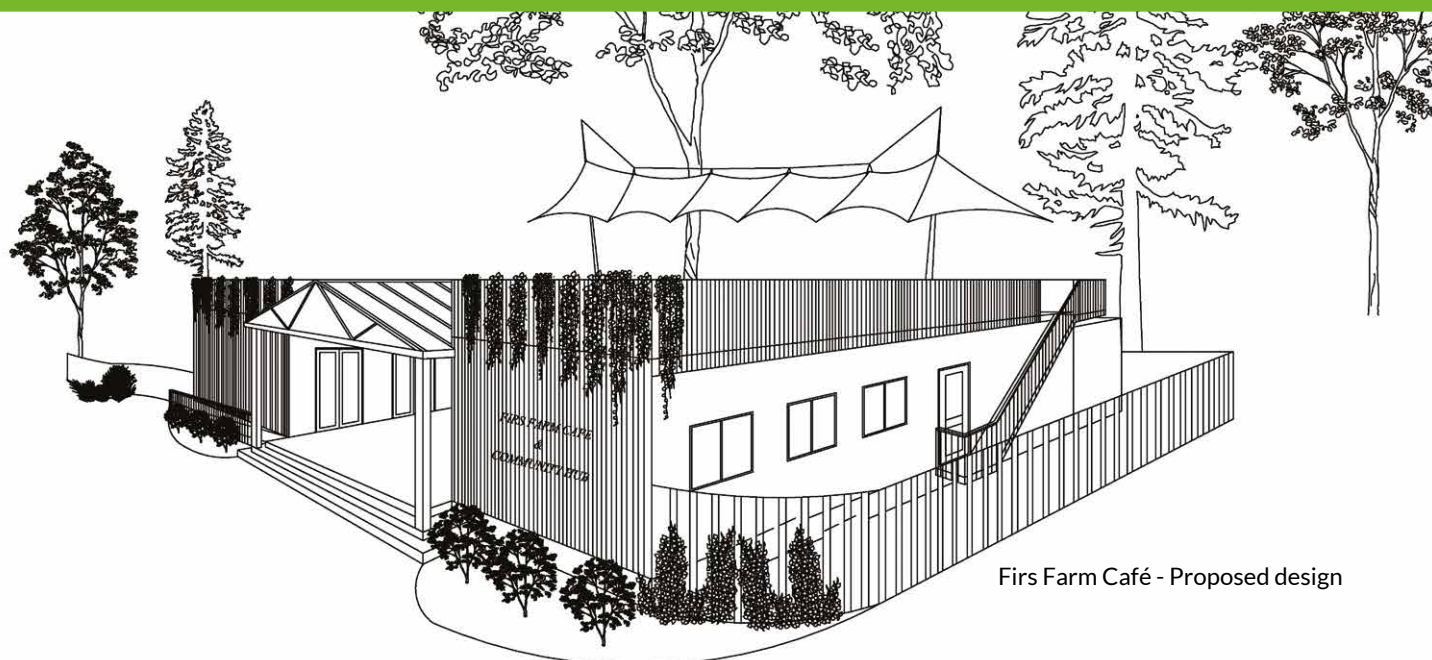


Firs Farm Community Café

The next chapter of this award winning story is about to begin...



Firs Farm Café - Proposed design

The Friends of Firs Farm, with the backing of the London Borough of Enfield (LBE) and Thames Water, are coming together to create a community café and hub; for people of all ages, in the heart of London's newest natural wetlands where the community as well as the wildlife can flourish.

Since 2014, an underused playing field has been transformed into a national award winning natural environment.

30,000 tonnes of soil have been moved; more than four hundred trees planted, as well as shrubs, bulbs, marginal water plants and wildflower meadows have been seeded, creating one of Europe's largest Sustainable Urban Drainage Systems (SUDs) schemes.

Can YOUR BUSINESS help to write the next chapter of this environmental success story?



View across the pond in Firs Farm

The Firs Farm Community Café

Project Team are seeking business 'do-ers'



We want to hear from businesses who can do – that is donate time, materials, money and expertise to help sustain the future of this exciting flagship project.

Our vision is to create a welcoming, flexible community space, in keeping with the wetlands, which is aesthetically pleasing and can be used by **ALL**. We envisage that it will be constructed from sustainable, reclaimed materials, featuring 'living walls', to blend into the habitat.

The Community Hub will be designed as an educational, recreation and social space, which can be used by schools and the wider community.

We want Firs Farm Community Hub to be a special place for special people; catering for children and adults with special needs.

The vision is to build Enfield's first Changing Places Toilets*; a dedicated space designed for children with autism; a sensory garden and other facilities to make a difference to the lives of people living with dementia and other life inhibiting conditions.

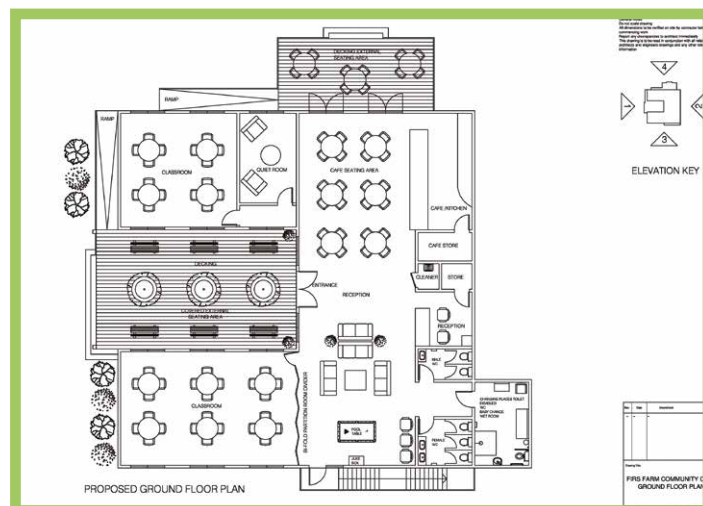
Promises are already starting to come in from all over London, but more business support is still needed.

Your contribution would be permanently recognised in Firs Farm Wetlands.

Firs Farm Wetlands is a special place



Proposed Café location in Firs Farm



Suggested internal layout

When can we talk to you about what your business might be able 'to do'?

Please contact Toni Guiver
friendsoffirfarm@gmail.com or 07956 537974

Follow us:

www.firfarmn21.org

facebook.com/FirsFarmParkN21

twitter.com/FirsFarm

* In the UK over a quarter of a million people are unable to visit places because they cannot use standard public toilets. This includes people with profound and multiple learning disabilities, motor neurone disease, multiple sclerosis, cerebral palsy, as well as many older people, families and their carers.

