

# GET INVOLVED IN THE ENFIELD TOWN PROJECT



## How does the proposed plan respond to what you have told us?

Take a look at the proposed plan and tell us how you think it responds to the Enfield Town design principles.

### Do you think the proposed plan will support:

- Making Enfield Town safe for all?
- Developing a vibrant economy in Enfield Town?
- Helping Enfield Town to be a great place to be?
- Offering transport choices to, from and around Enfield Town?
- Celebrating the heritage of Enfield Town?

Tell us what you think by  
Sunday 11 September 2022 via the  
survey on the project page linked  
below and via the QR code.



## Name our new public space to **WIN £300** to spend in Enfield!

Enter the competition to name the proposed new public space at the junction of Church Street and Little Park Gardens (near the old telephone boxes).

Take the survey via the link or QR code below, or request a paper copy and tell us your suggestion for the name of this space. The winning name will be selected by the Cabinet Member for Public Spaces, Culture and Local Economy from the names suggested. The person who suggests the winning name will **win a £300 voucher** to shop locally in Enfield.

## DESIGN THE LIBRARY GREEN SENSORY GARDEN WITH US

We are exploring the option of introducing a sensory garden in the south western corner of the Library Green (near the Library). A sensory garden is a space which has features such as plants, surfaces, materials and objects that can stimulate people's senses through touch, sight, scent, taste and hearing. These spaces can be enjoyed by many, including children and neurodiverse people such as autistic people.



## IN THE SENSORY GARDEN...

What would you like to **see**?

What would you like to **smell**?

What would you like to **taste**?

What would you like to **hear**?

What would you like to **touch**?

*Tell us via the survey via the link or QR code below or by joining one of our drop-in sessions.*



SEE SEPARATE INFORMATION BOARD FOR MORE DETAILS ON THE PROPOSED PLAN, NEW PUBLIC SPACE AND THE SENSORY GARDEN <https://letstalk.enfield.gov.uk/EnfieldTown>



# THE ENFIELD TOWN PROJECT



Enfield Council are proposing a range of improvements to Enfield Town to encourage a welcoming, safe, accessible and thriving town centre in the future. This work is part of the Enfield Town Action Plan which sets out a vision for the town centre, and a plan to support local businesses, encourage people to visit, and provide welcoming and vibrant public spaces. As part of this plan, the Council seeks to activate some of the public spaces across the Town Centre such as

Fountain Island which has recently hosted the 'Enfield Live' festival that saw performances from a range of local music artists. Through the development of the design we have considered the impacts on a range of groups which is captured in our equalities impact assessment. Read through the following boards which show the longer-term plan for Enfield Town including changes to public spaces and how you can get involved.

**Visit us at one of the pop-ups below, or join a webinar to hear more about the project.**

## POP-UPS:

### FOUNTAIN ISLAND

Sun 31 July, 12pm – 6pm

### LIBRARY GREEN SENSORY GARDEN

Drop-in session, Tues 9 Aug, 10am – 1pm

### MARKET SQUARE

Fri 9 Sept, 1pm – 4pm

### LIBRARY GREEN SENSORY GARDEN

Drop-in session, Sat 10 Sept, 10am – 1pm

A webinar will be held online on Tuesday 2nd August from 6pm – 7.30pm. The link to join the webinar can be found on the project page at the link below or via the QR code.



**VIEW THE PROPOSED PLAN AND TAKE THE SURVEY TO HELP US SHAPE THE FUTURE OF THE TOWN CENTRE:** <https://letstalk.enfield.gov.uk/EnfieldTown>



# PROPOSED PLAN FOR ENFIELD TOWN



Willow Road Junction

- 1 Station Plaza
- 2 Fountain Island
- 3 Market Square
- 4 New Pocket Park
- 5 Library Green
- 6 Library Green Sensory Garden



**VIEW THE DETAILED PLAN AND SUPPORTING INFORMATION AT**  
<https://letstalk.enfield.gov.uk/EnfieldTown>



# ABOUT THE ENFIELD TOWN PROJECT

## BACKGROUND AND HISTORY OF PROJECT

Enfield Town has a rich heritage and history, and is an important town centre in our borough. The project has a focus on improving public realm spaces that provide places to stop and rest, and promote a bustling and vibrant town centre. The project also proposes improved walking and cycling provisions as well as public transport passenger facilities to reduce car use and promote sustainable transport options.

The Enfield Town project commenced in 2019 and aims to deliver improvements for the people who spend time in and visit Enfield Town. The project has already delivered improvements in the Town Centre, namely the Little Park Gardens Pocket Park.

We have worked with number of stakeholders on this project including the Enfield Town Consultative Group (made up of a range of community representatives), the Old Enfield Charitable Trust, St Andrew's Church, emergency services, Palace Gardens and Exchange Shopping Centre, Transport for London and other community groups and organisations.

### Your input into the plan

In 2019 we heard from people who live, work and visit Enfield Town about what you want to see in the future in the Town Centre. This engagement phase led directly to the creation of the Enfield Town Design Principles we have used when developing the proposed plan for Enfield Town. The Design Principles are:

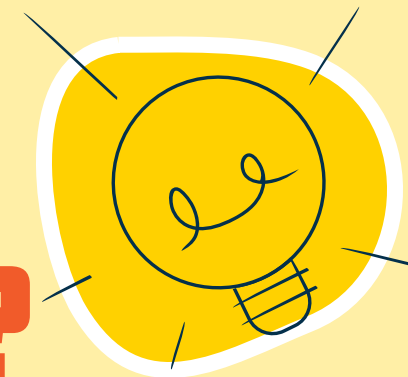
#### ENFIELD TOWN

- Is safe for all
- Has a vibrant economy
- Is a great place to be
- Offers transport choices
- Celebrates it's heritage.

In 2020, we showed you an earlier version of the proposed plan for the Town Centre. From the feedback received and conversations had with local businesses and community groups, we further revised the plan. We also held co-design workshops on the public realm designs and presented these to you in 2021.

We have undertaken further stakeholders engagement and finalised the plan that is presented to you today. Thank you to everyone who has been involved in this process so far.

## WHAT'S THE PLAN FOR ENFIELD TOWN?



### The proposed plan for Enfield Town features:

- Enhancement of the Market Square in collaboration with the Old Enfield Charitable Trust and St Andrew's Church
- A new public square at the junction of Little Park Gardens and Church Street (outside Nationwide Building Society)
- A more vibrant public space on 'Fountain Island'
- A better experience when arriving at Enfield Town Station and entering the Town Centre
- An improved connection between the Market Square and the shopping centre entrance
- An upgraded link between the Library Green and Enfield Town Park
- Improved greening across the town centre
- Improved and new pedestrian crossings throughout the Town Centre
- Wider footways in some locations
- Safer cycling options and connecting the Town Centre with nearby cycle routes
- Improved bus stop accessibility
- Revised parking and loading restrictions
- Dedicated Blue Badge disabled parking bays throughout the Town Centre
- Improved safety, including improved CCTV and proposed 20 mph speed limit on all roads in the Town Centre

## WHEN WILL WE SEE CHANGES IN THE TOWN CENTRE?



This is an ambitious plan for our town centre and the Council have already secured more than £5m to enable change to happen. To deliver the complete project, including changes to pedestrian crossings and other transport elements, the project will need additional investment from Transport for London (TfL).

More certainty on funding from TfL is expected in Autumn 2022. Once this is known the Council can look to make decisions on the overall scope of the project. This would involve a formal approval process which would include a statutory consultation. The consultation will include a final opportunity where anyone can object or make representations to the proposed traffic orders associated with the project.

The statutory consultation is likely to occur in 2023. Should the project be approved, construction is anticipated in 2024.

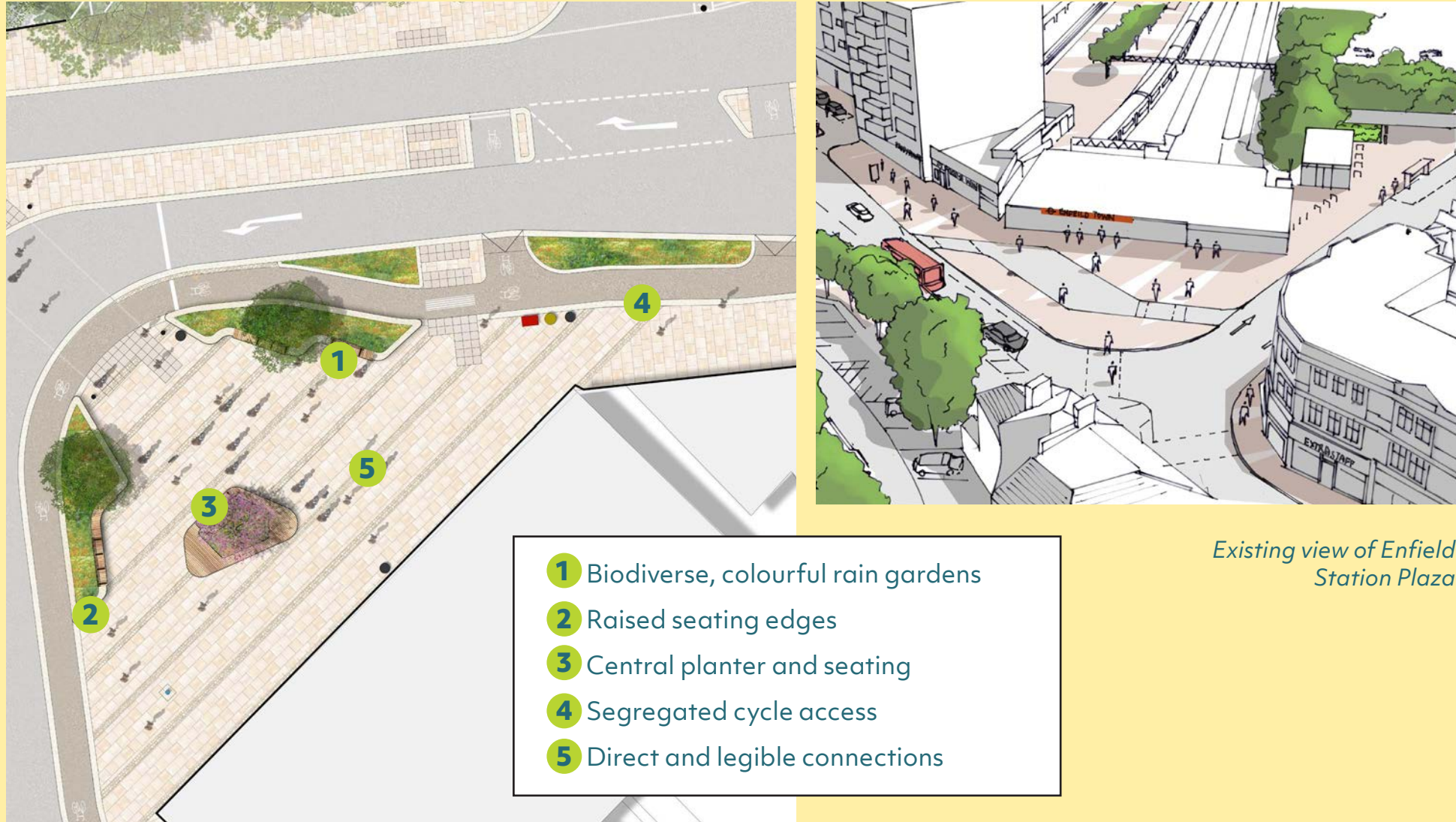
Read more about the project and view the proposed plan and supporting information at the link or via the QR code below.



.....  
**READ MORE AT** <https://letstalk.enfield.gov.uk/EnfieldTown>



# TOWN STATION PLAZA



Enfield Station Plaza illustrative plan



Daytime view looking towards Church St from Enfield Town Station entrance



Night-time view looking towards Church St from Enfield Town Station entrance

## ENFIELD STATION PLAZA: A WELCOME ARRIVAL

The station plaza will present a beautiful welcoming space and make walkable connections into the town clear and legible. The space will be surrounded by beautiful rain garden planting which will provide a sense of refuge from surrounding roads and enhance comfort for people sitting, dwelling or waiting for onward travel within the space. Station Plaza will reference the work of John Keats and other literary connections to Enfield, weaving this into the fabric of the place to further reinforce the Town's distinctive character.



Island planter and seating design



Rain garden and raised seating edge design

# FOUNTAIN ISLAND



Fountain Island illustrative plan

- 1 Historic fountain retained in place with an enhanced setting
- 2 Raised seating edges
- 3 Biodiverse, colourful rain gardens
- 4 Weighted, gravity fixed moveable seating
- 5 Alfresco dining



Daytime view looking west towards the fountain



Night-time view looking west towards the fountain

## FOUNTAIN ISLAND: THE MEETING PLACE

A flexible space allowing for celebration, gatherings and small events and performance; this space will be adaptable and programmable to meet the needs of a town-wide event calendar. Fountain Island will supply opportunities for alfresco dining where visitors can enjoy a bite to eat and a drink with friends while sat in a joyous setting surrounded by fabulous architectural gems and beautiful biodiverse planting which provides a sense of refuge from the busy surrounding vehicular traffic. Public seating will be arranged in comfortable, safe and inviting arrangements to provide both social opportunities and, by contrast, allow for more intimate and private moments.



Rain garden raised edge design



Moveable curved bench design (every-day mode)



Moveable curved bench design (events)



Moveable curved bench design (events)

# MARKET SQUARE



The Market Square illustrative Plan

- 1 Flexible and functional space
- 2 A bosque of new trees with public seating to respond to the historic arrangement
- 3 Public seating within the square
- 4 Repurposed market house
- 5 Alfresco dining



Daytime view looking towards the churchyard (non-market days)



Daytime view looking towards the churchyard (market days)



Night-time view looking towards the churchyard (market days)

## THE MARKET SQUARE: THE BEATING HEART OF ENFIELD TOWN

The Market Square is a showpiece in Enfield Town and will re-establish itself as an active and vibrant destination for local residents, workers and visitors alike. The Square will be able to host a variety of events and performances as well as it's famous weekly market. A simple, recessive yet high quality palette of materials will provide an enhanced setting for the surrounding fine architecture and provide a functional and accessible flush surface to host events and allow people to easily move through.

Fine detail, inscriptions or patterns will be seamlessly woven into the design to help describe the rich history and importance of the Market Square. There are also opportunities to retain and reinstate some of the original materials to pay homage to the historic Square.

The Market house, retained in place, will be repurposed as a new café kiosk whereby a complementary internal structure is inserted within the original structure to respect its architectural heritage. This aims to further activate the Square with alfresco dining opportunities.

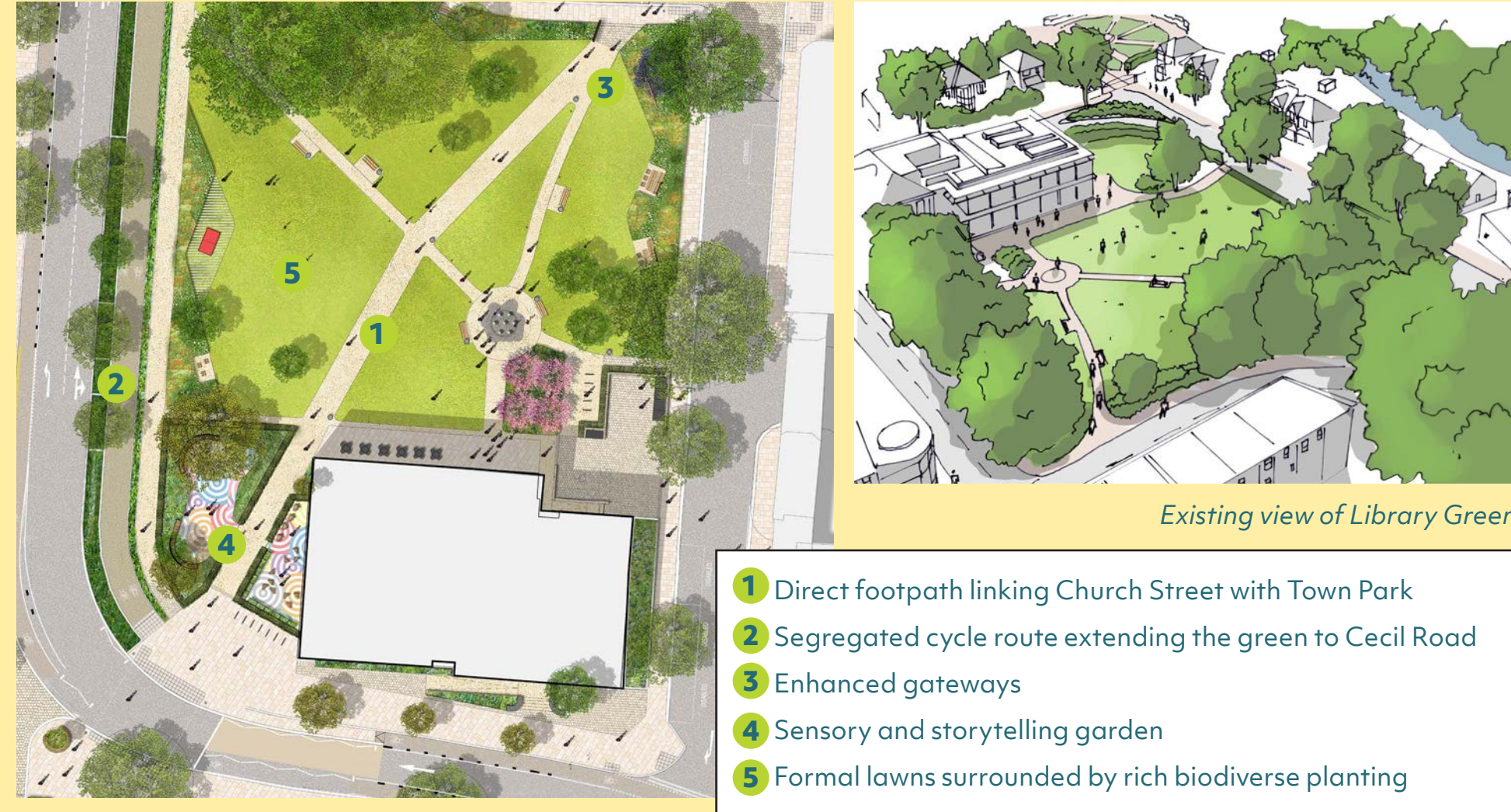


READ MORE AT <https://letstalk.enfield.gov.uk/EnfieldTown>





## LIBRARY GREEN AND TOWN PARK ENTRANCE



Library Green illustrative plan



Bench design

Picnic table design

### LIBRARY GREEN: A PLACE TO REST, READ AND ENJOY

Library Green is a popular space for residents, workers and visitors. The proposals here are about sensitive interventions and small adjustments to make a good place great. One of the main proposals is to provide a new central path creating a powerful connection from Church Street to Town Park through the Library Green to enhance connectivity between some of Enfield Town's greatest assets. Other proposals include improved public seating provision, safe and segregated cycle access, and events infrastructure appropriate to the needs of the place. The cherished lawns will be retained and protected while planting to the periphery will be redefined as a more biodiverse, colourful and fragrant backdrop, at the same time removing hiding potential and making the space feel safer and less attractive to anti-social behaviour.



Daytime view looking towards the library



Daytime view looking towards the library on market or event days

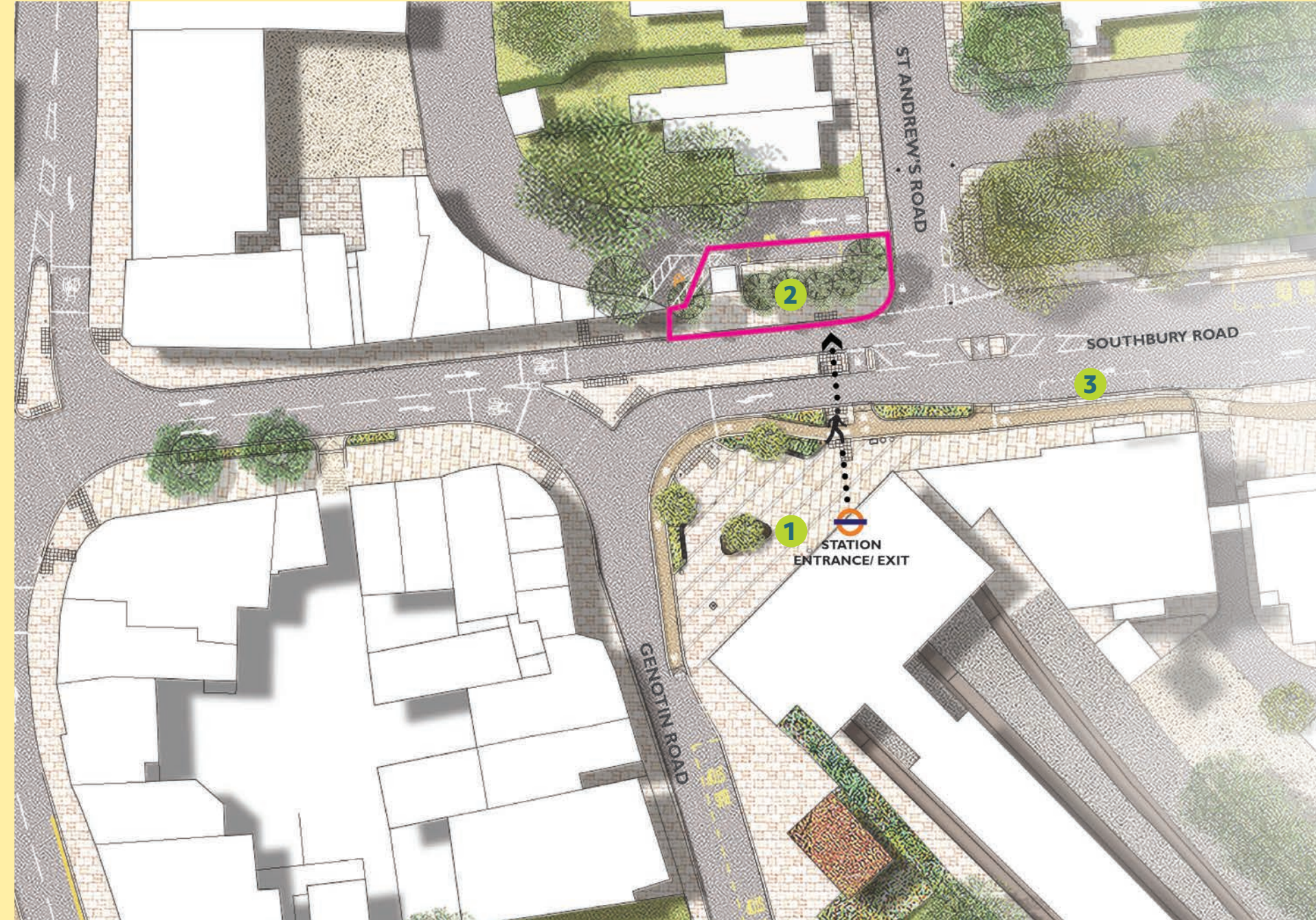


Night-time view looking towards the library on market or event days



Daytime view looking south to the new segregated cycleway

## NEW RIVER LOOP CARPARK TAXI RANK



New River Loop taxi rank illustrative plan

- 1 Station Plaza
- 2 New River Loop taxi rank
- 3 New passengers pick up & drop off only bay

### STATION TAXI RANK: A SPACE TO IMPROVE ACCESSIBILITY TO THE STATION

Located by the station plaza is a new dedicated taxi rank that is to be created by the southern entrance of the New River Loop carpark. The proposals look to remove the existing fencing and open up the space to provide a direct pedestrian link with the station entrance, whilst retaining existing trees to maintain the strong green backdrop along this edge. Acting as an additional piece to the proposed dedicated passengers pick-up and drop-off bays immediately to the east of the station building, the new taxi rank is proposed to be solely for Transport for London black cabs. This is proposed in addition to the taxi rank planned on The Town, adjacent to the fountain island.



Daytime view looking towards Enfield Town Station entrance from the proposed taxi rank

## ART TRAIL

### ART TRAIL: A COLLABORATION WITH LOCAL ARTISTS TO CELEBRATE HISTORY AND CULTURE

As part of the public realm designs proposed across Enfield Town, a comprehensive new art trail will weave through these spaces and interface seamlessly with the public realm. Artists will be commissioned by the Council to create the art trail and will deliver creative engagement activities to enable local people to participate and explore ideas and designs for the artworks. The art trail will help to enliven the spaces whilst reducing physical and visual obstruction. The art trail will lace different parts of the Town Centre together and help improve wayfinding for pedestrians in a visually stimulating way. We have engaged with the local people of Enfield and various stakeholders to gather ideas for the art trail. Art pieces will aim to reflect the uniqueness of each space and celebrate the history, people and culture of Enfield Town.

### Some ideas and examples of potential elements that could be incorporated into the arts trail



Metal inlaid text / imagery



Metal inlaid text / imagery



Inlaid imagery and interpretive symbols



Decorative and interactive gateway features and wayfinding signage



Decorative tree grilles



Metal relief work



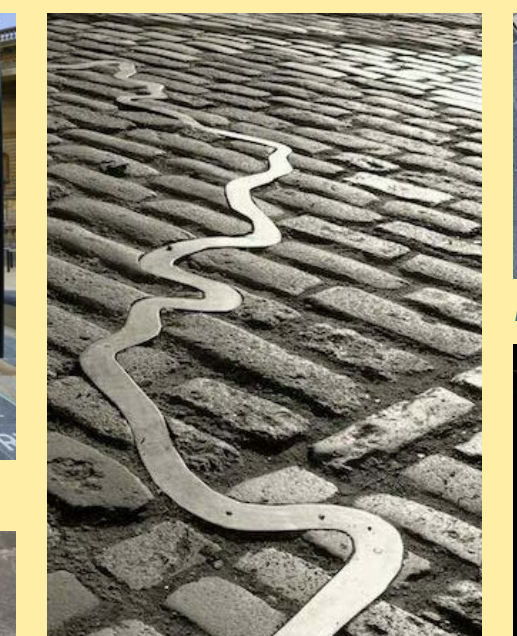
Tactile and factual elements



Text / poetry etched / inlaid into paving



Historic timeline



Decorative drainage channels



Highlighting key historic dates

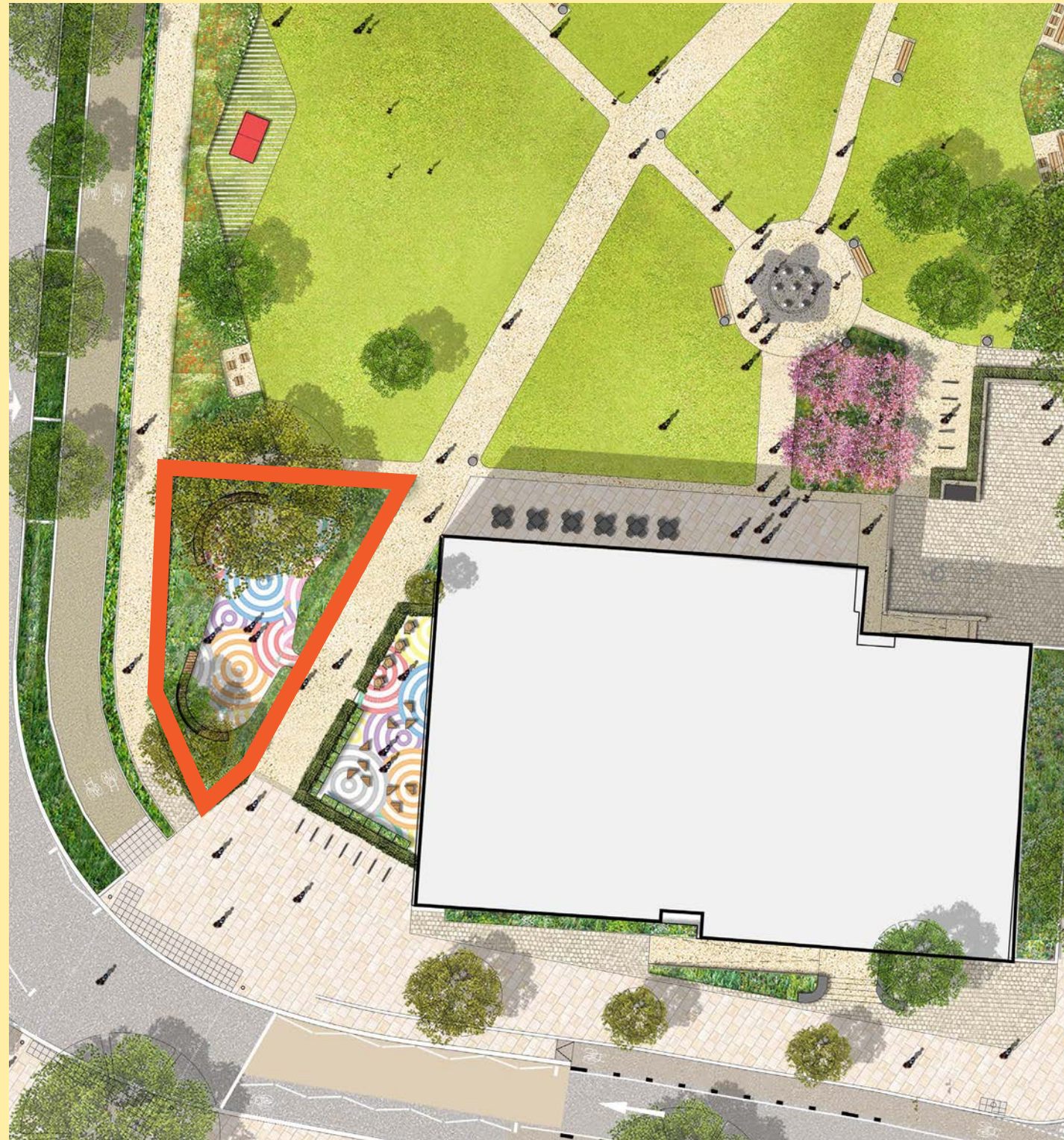


READ MORE AT <https://letstalk.enfield.gov.uk/EnfieldTown>





# SENSORY GARDEN IN THE LIBRARY GREEN



Sensory garden location within Library Green



Sensory garden dimensions

- 1 Sensory Garden
- 2 Story telling space
- 3 Library Building

## LIBRARY GREEN SENSORY GARDEN: AN OUTDOOR EXTENSION OF THE LIBRARY'S SENSORY AREA

The proposals for the Library Green provide a golden opportunity for exploring the introduction of a new sensory garden located to the south-west of the space. The sensory garden will act as a valuable new extension to the library which builds upon its current offerings and provides a unique resource to be enjoyed during warmer months of the year. It will also have the added benefit of freeing up space inside the library for other uses so that this important resource can better serve the community of Enfield. The sensory garden is positioned strategically alongside the new central path to provide both easy access and sufficient natural surveillance into the garden from passers-by, thus discouraging anti-social behaviour.

To ensure the space fully reflects the specific needs of the community, we want feedback from Enfield residents, students, visitors, business owners and others interested to guide the design of the space and what sensory components are included.

A sensory garden is a space where everyone is welcome and has features such as plants, surfaces, materials and objects that can stimulate people's senses through touch, sight, scent, taste and hearing. These spaces can be enjoyed by everyone, including children and neurodiverse people such as autistic people.

## KEY CONSIDERATIONS:

- **PROVISION OF SEATING** – Provision of seating – Should seating be included and if so, what type of seating? (foldable tables and chairs, reclining, built-in to planter, moveable, fixed)
- **ACCESSIBILITY FOR ALL USERS** – How should wheelchair users, partially sighted, people with learning difficulties be catered for and access the space?
- **SENSORY ELEMENTS** – What kinds of sensory elements should be included?
- **MATERIALS** – What kinds of materials would you like to see used?
- **CREATIVITY** – Financial challenges mean we need to be creative in achieving a low maintenance space that has longevity and provides benefits for future generations.



### Sensory planting palette

- Stimulate all 5 senses
- Attracts wildlife
- Safe to touch and non-toxic



### Attracting wildlife

- Relaxing sounds of wildlife such as bees buzzing and birds singing



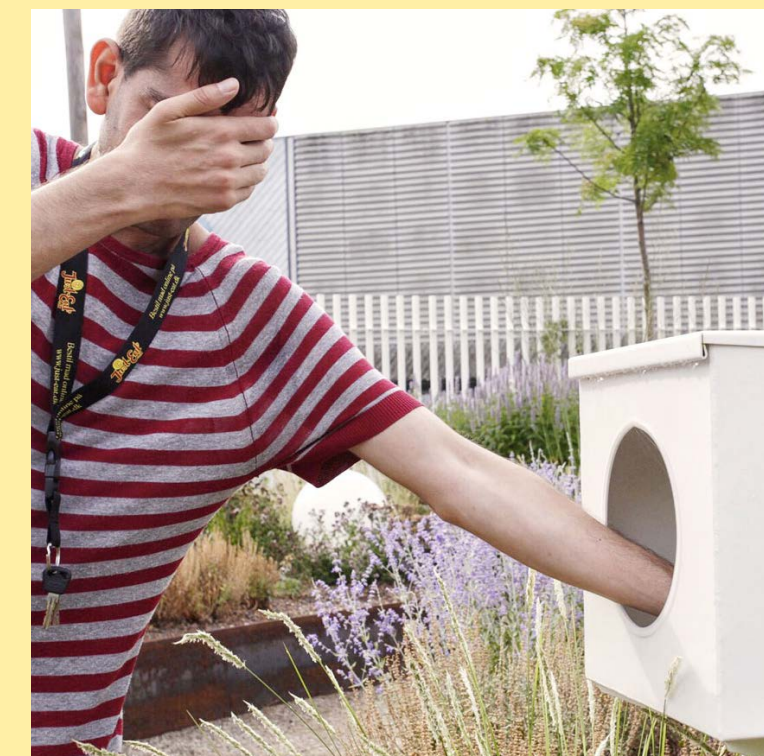
### Harnessing the elements

- Reflecting and distorting light using mirror-like materials
- Using the wind to create sound
- Including objects and planting that move with the breeze



### Messages and poetry

- Use of speakers to play evocative and immersive music or poetry
- Use of QR codes to link to resources
- Information panels



### Interactive and tactile

- Tactile and unique surfaces
- Musical instruments
- Interactive games



### Educational

- Space to grow vegetables
- Learning to encourage social interaction
- Opportunities to learn about plants and the natural environment



### Accessible

- Smooth, hard surfacing throughout
- Lower planting beds and sensory equipment for wheelchair users
- Contrasting colours for partially sighted users



READ MORE AT <https://letstalk.enfield.gov.uk/EnfieldTown>





# NEW PUBLIC SPACE (OFF CHURCH STREET)



Existing view of the junction of Little Park Gardens and Church Street



Daytime view looking towards Church Street from the pocket park



Night-time view looking towards Church Street from the pocket park



Pocket park illustrative plan



Rain garden design



Raised seating edge design



Repurposing the listed telephone kiosk



Route of the culverted Saddler's Mill Stream

## RE-IMAGINING A HIDDEN STREAM

This new space is formed by removing vehicular access from Church Street to Little Park Gardens. This allows the creation of a 'pocket park' which provides opportunities to pause and take a break from the busyness of Church Street. Access to the school and car park will be via alternative routes. The space will encompass rich, biodiverse rain gardens with beautiful seasonal flowering species, public seating, public art weaved into its fabric and exciting re-use of the existing heritage listed telephone kiosk. Of particular note is the culverted Saddler's Mill stream that currently flows beneath the space. Investigations are underway to understand the potential of contact with this through sound.



Activating planting areas with play



Beautiful rain gardens to slow down runoff



Interpretation within the paving

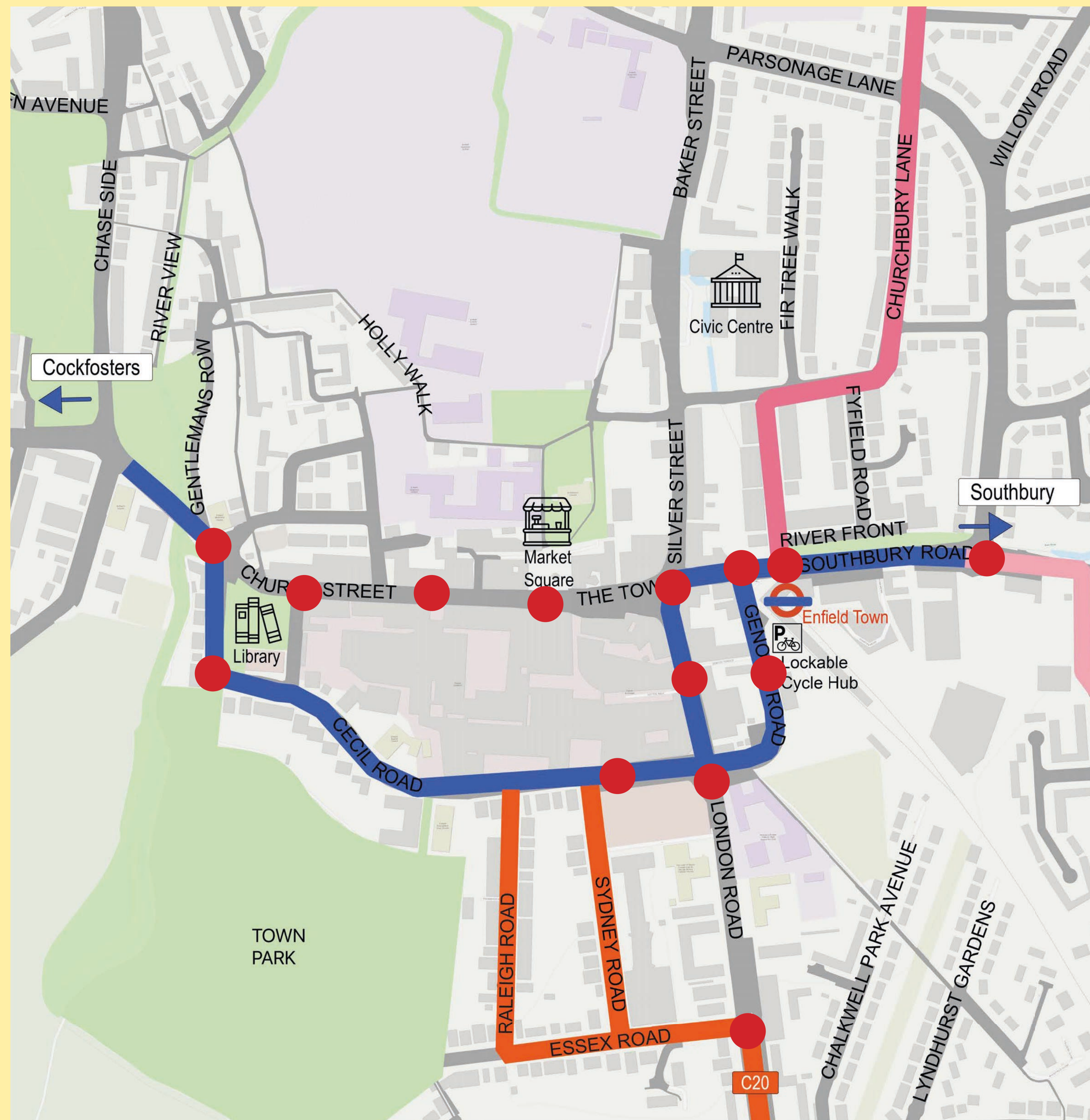


ENTER THE COMPETITION TO NAME THIS NEW PUBLIC SPACE VIA THE SURVEY AT  
<https://letstalk.enfield.gov.uk/EnfieldTown> **WIN £300!**










# EXISTING AND PROPOSED WALKING AND CYCLING NETWORK



## WIDER PROJECT LINKS

-  Cycleway 20 – connects Enfield Town and Palmers Green and links to Cycleway 21 connecting to Edmonton Green
-  Proposed Cycle Route as part of Enfield Town Project, with further work to follow to continue the route West to Enfield Chase and beyond to Cockfosters
-  Enfield Town to Broxbourne – a proposed route with funding which will connect to the New River and link to Broxbourne Town Hall
-  Enfield Town to Ponders End – a proposed future route that will travel through Bush Hill Park and onto Ponders End Station
-  New or improved pedestrian crossings and junctions around the town centre



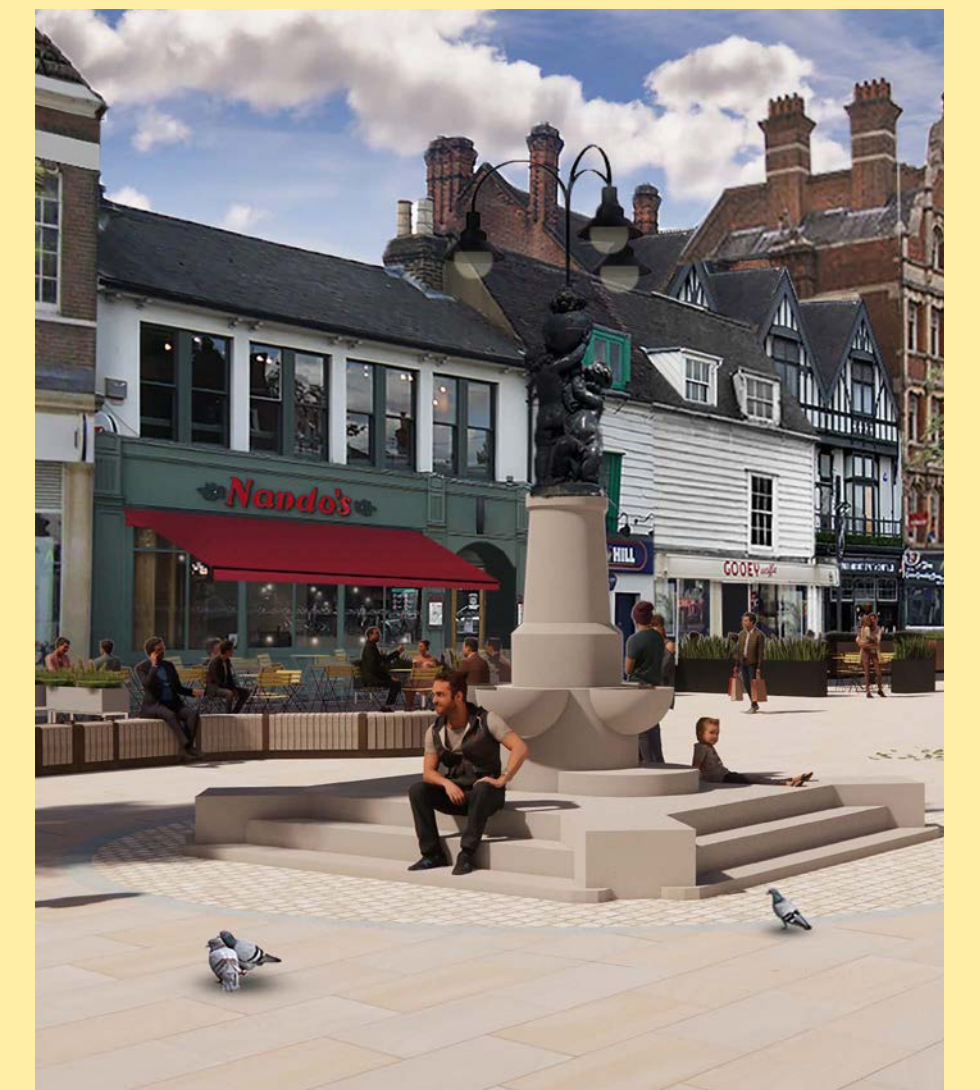
**VIEW THE DETAILED PLAN AND SUPPORTING INFORMATION AT**  
<https://letstalk.enfield.gov.uk/EnfieldTown>





# THE ENFIELD TOWN PROJECT

Enfield Council are presenting a proposed plan of improvements to Enfield Town that will deliver a vibrant town centre for the future. These proposals have been informed by extensive engagement with stakeholders and the community. The proposals are subject to funding and further discussions with Transport for London (TfL). Thank you for getting involved and sharing your views with us so far.



View the proposed plan and take the survey via the link or QR code below to help us shape the future of the Town Centre.



TAKE THE SURVEY AT <https://letstalk.enfield.gov.uk/EnfieldTown>

