

# 'Unlocking Broomfield Park for the Community'

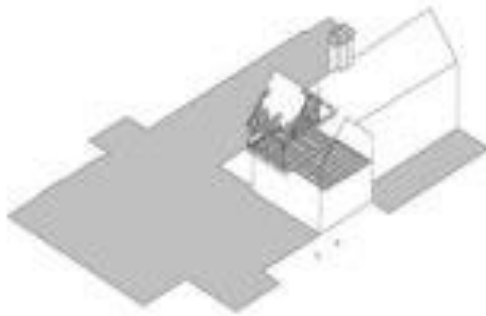
Enfield Heritage Forum  
12<sup>th</sup> September 5:30 – 7 pm

[www.enfield.gov.uk](http://www.enfield.gov.uk)

Striving for excellence



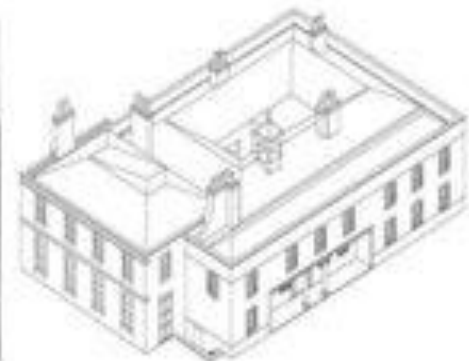
# History of the House



Broomfield House c1562



c1726



c1820



1905

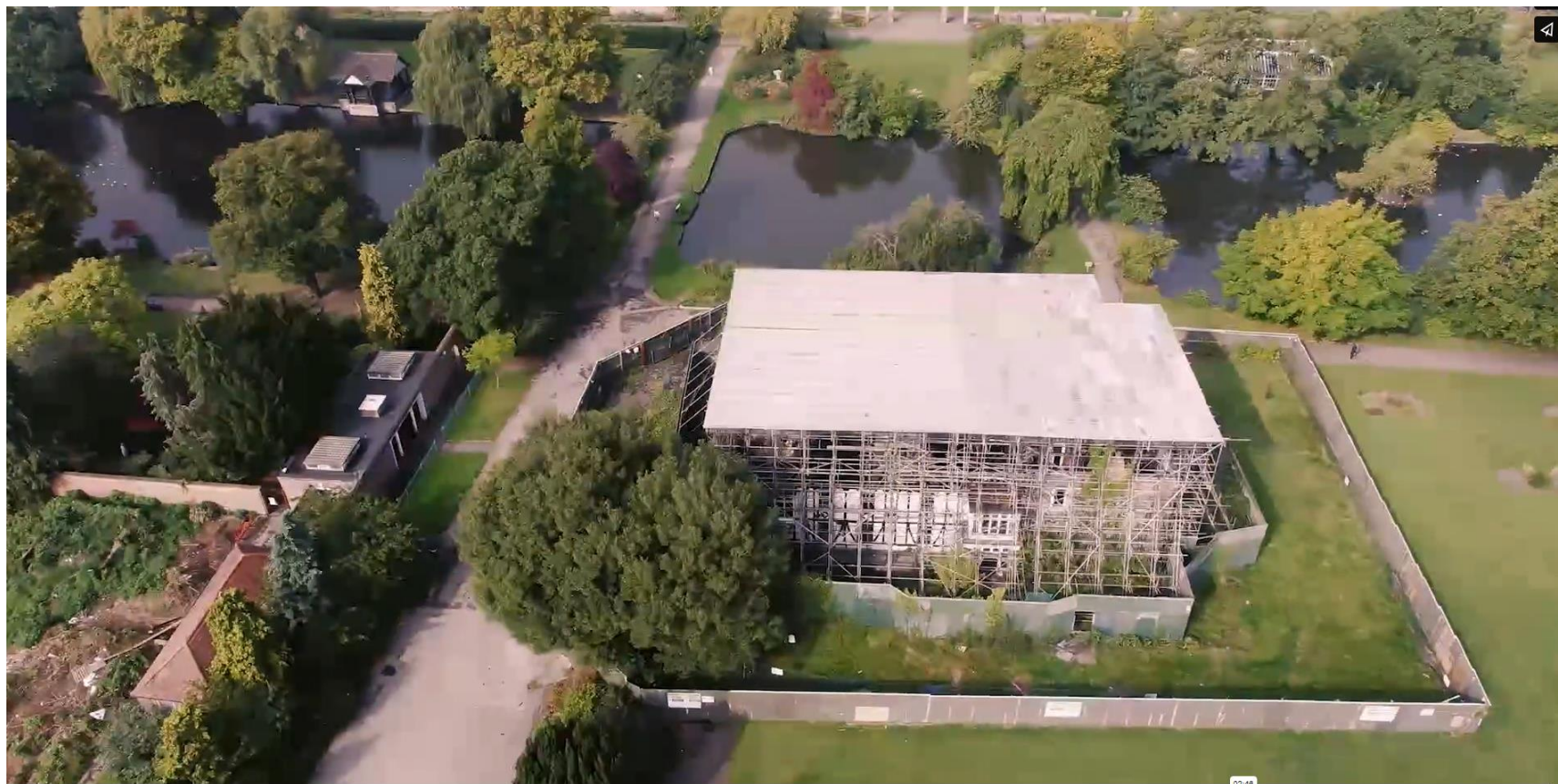


1976



2012

# Introduction: Broomfield House and Park

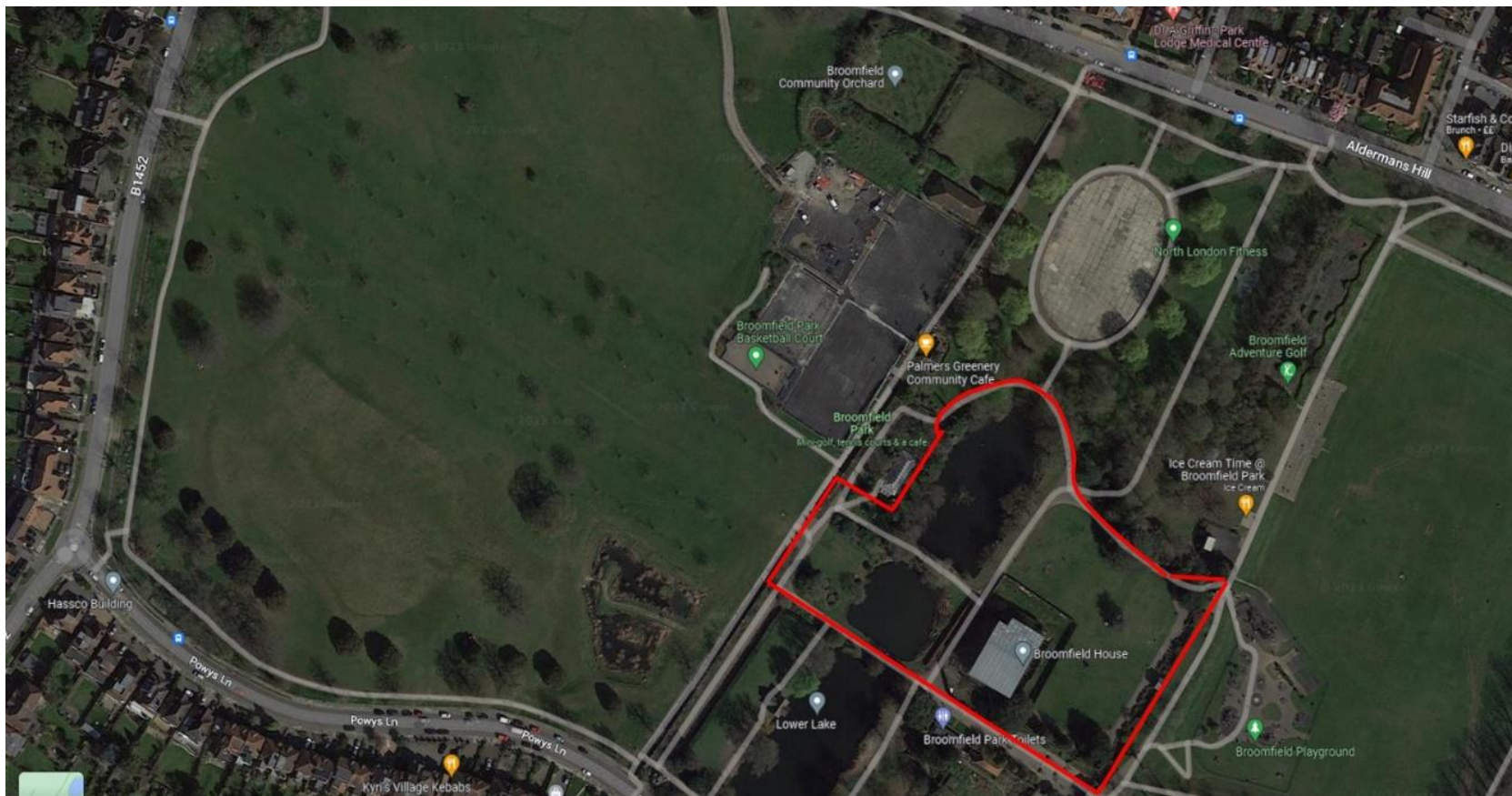


# Project Vision

- Becomes a flagship park for North London, known for its historic landscape and heritage assets, natural environment, and community provision.
- Provides opportunities for Enfield borough communities to thrive and learn about its history and to volunteer and participate in its upkeep and activation.
- Inspires residents and visitors to live ecologically and sustainably, with community growing spaces and orchards, flourishing wildlife, and beautiful gardens.



# Unlocking Broomfield Park for the Community



# Project Timeline

Round One application submitted – 17<sup>th</sup> August 2023

- Decision expected from National Lottery Heritage Fund November 2023
- Start the Development Phase February 2024 – this will last two years
- Deadline for Round Two application – November 2025
- Decision made by National Lottery Heritage Fund – March 2026
- Start the Delivery Phase – May 2026
- Works complete – July 2028

# Project Plan

## Development phase

- Procurement and team assembly
- Surveys
- Co-curation of memorialisation of house
- Community pilot activities
- Securing planning and statutory consent for proposals
- Fundraising and business planning

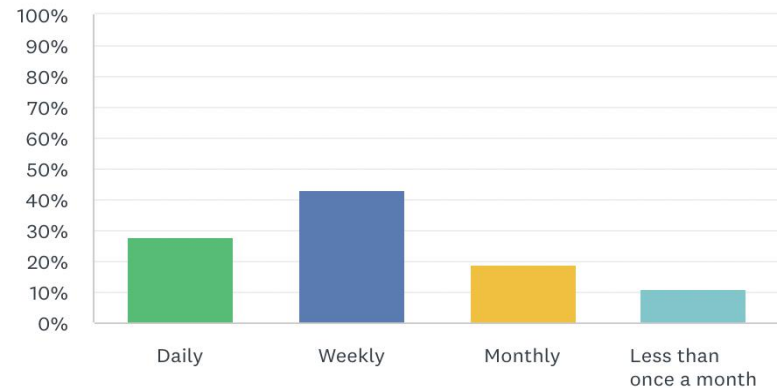
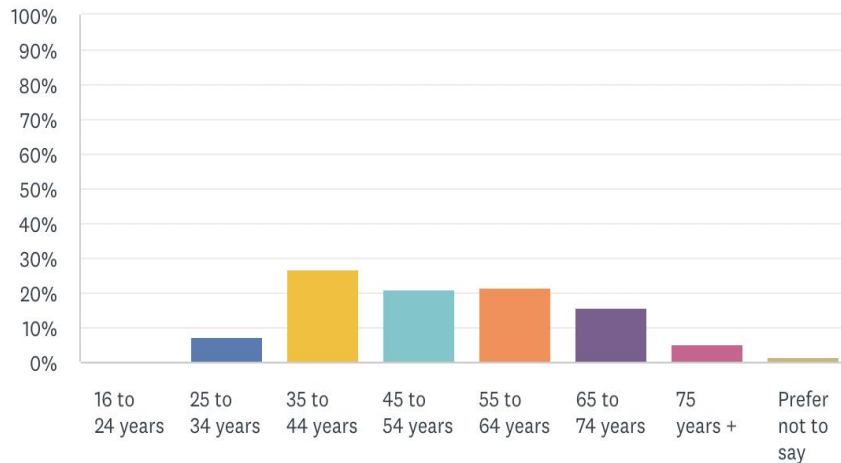


## Delivery phase

- Dismantle Broomfield House
- Memorialise Broomfield House and reintegration into Park
- Works to the Upper and Middle Lakes
- Restoring and enhancing historic Baroque landscape
- Relocate salvaged material from Broomfield house
- Install interpretation and improve wayfinding
- Cultural and heritage events
- Evaluation

# How Communities Have Been Involved So Far

**1250 residents consulted!**





# Broomfield Word Cloud

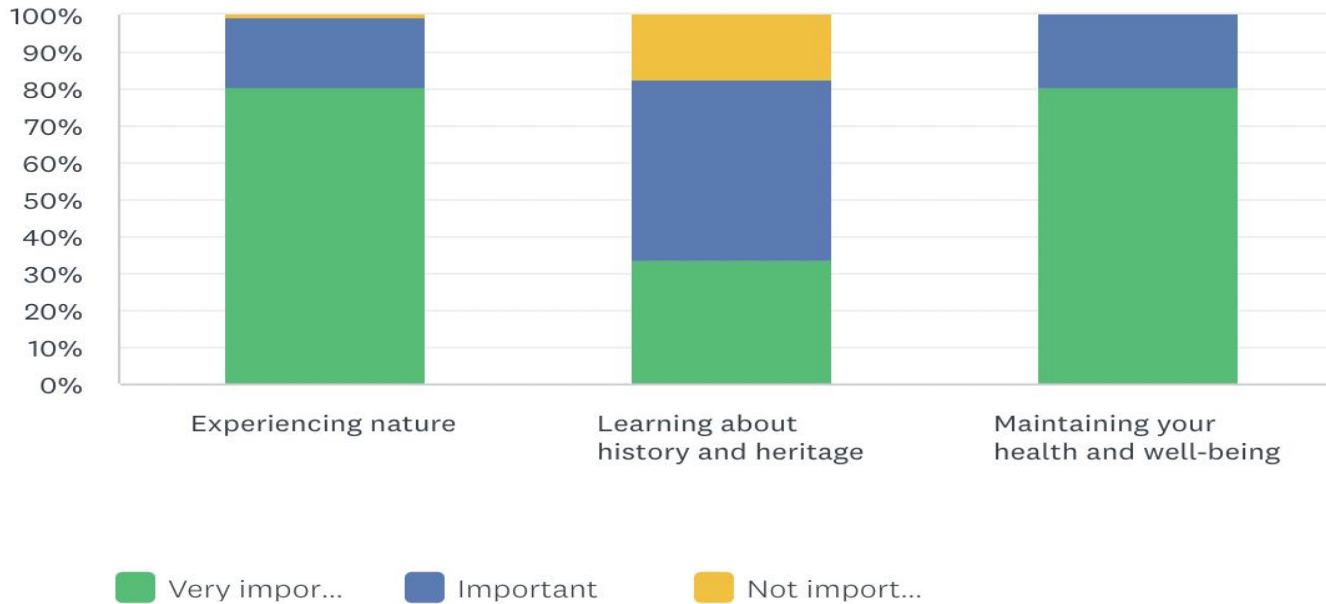
Beautiful green space  
community events  
environment  
relax conservatory  
activities etc lovely  
swans birds variety  
feel beauty walk  
access great plants  
natural also local cafe  
around large history  
ducks safe  
sports place  
ponds wildlife  
plants trees greenhouse  
duck ponds gardens lakes

Beautiful park  
walled garden  
flower beds  
big wetlands  
gardens use events  
flowers  
Green space  
open space  
playground  
ponds  
beautiful trees  
community beautiful  
community cafe children  
see peaceful family  
beautiful gardens  
beautiful flowers

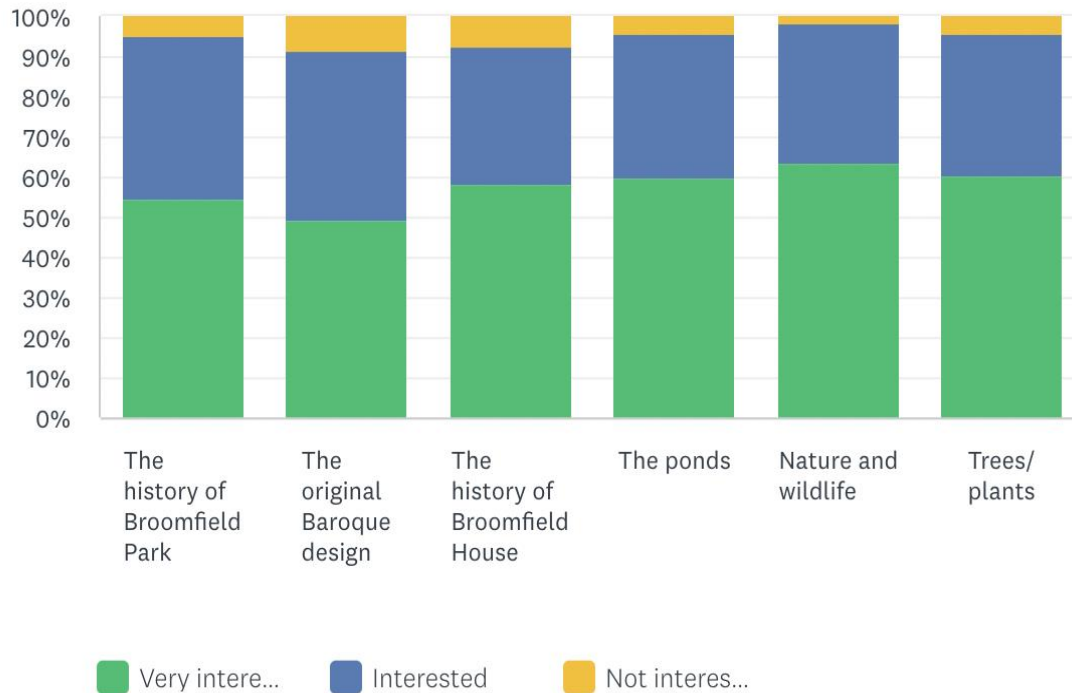
dog walking  
bandstand  
interest  
enjoy open  
facilities  
greenery  
space park  
love water  
nature reviews kids lots  
area play area  
lakes wildlife  
lakes good quiet well  
wildlife Nice Green  
house orchard size  
open green space  
well maintained  
boating lake exercise  
different areas

surroundings tranquil  
Broomfield House Peace  
tennis courts  
field diversity  
varied friends  
Clean  
play area  
wildlife  
well maintained  
exercise

# What is Important to You?



# How interested are you in learning more about....



How do you want to learn more:

1. Heritage/ cultural events
2. Information panels
3. Self-guided trails

# How communities will be involved in the Development Phase

- Murals
- Wellbeing activities
- Community archaeology
- Broomfield House memorialisation ideas
- Schools



# How communities will be involved in the Delivery Phase

- Programme of heritage and cultural events
- Community outreach projects
- Programme of accessible tours and activities for adults, young people and children
- Activities to enable young people to develop skills
- The co-curation of family activities and resources
- School projects
- Learning for life opportunities
- Paid training opportunities and accessible work opportunities
- New volunteering opportunities

# Questions?

