

# Firs Farm Wetlands

Consultation  
Summer 2015



## Introduction

Firs Farm Playing Fields is an open space on the boundary between Edmonton and Winchmore Hill in the London Borough of Enfield. The space is dominated by sports pitches (12 football and 1 rugby pitch); however, there are substantial areas around the sports facilities that offer opportunities to create more natural open spaces. It is proposed to re-landscape these areas to restore a culverted watercourse (Moore Brook which is a 'lost' tributary of Pymmes Brook), create a combined wetlands and flood storage area and enhance woodlands and grasslands areas around the sports facilities.

The new watercourse channel was excavated in September 2014. The rest of the project is planned to be carried out over 2015/16. The area of wetlands to be created is approximately 1 Acre; the total area of enhanced habitat is 2.4 hectares – this includes the creation of a wildflower meadow, planting of up to 50 trees and the restoration of 500m of watercourse. The next step is to increase the size of the excavated area to enable wetland creation.

The project also aims to create a 600m green link across Firs Farm Playing Fields by providing a 3m wide combined cycleway and footpath. On this page is a map showing the existing site followed by the design proposals.



*Bird's eye view of the existing site*



*Existing entrance to woodland area on Firs Lane*



*Existing woodland area, view from north side*



*Existing excavated watercourse*



*Existing excavated watercourse*

# Proposed Plan

-  New footpaths
-  New 3m wide Pedestrian/cycle path
-  Mown grass
-  Wildflower meadow
-  Existing tree
-  Proposed tree



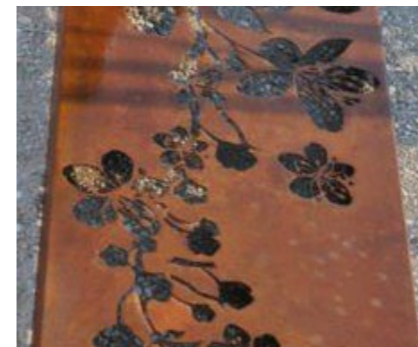
- ① New main entrance
- ② Improve 2nd entrance from Firs Lane
- ③ New wetlands with planting, footpaths and a wildlife hide
- ④ New footbridge
- ⑤ Improved eastern entrances
- ⑥ Planted bunds between pitches and watercourse
- ⑦ Potential new watercourse through part of woodland copse to feed into Wetlands
- ⑧ Potential new watercourse through grass field to feed into Wetlands
- ⑨ Potential new wetland community/visitor centre facility

↑ N  
Plan Not to Scale

## The New and Improved Entrances - Firs Lane Entrances



**Main Entrance Feature** Corten steel is a durable high quality material which can be used as a retaining wall



Artwork and lettering can be incorporated into the steel



Seating and planting can be incorporated into retaining walls



Tapered ductile iron bollard



**A Sketch of possible ideas for the main entrance**  
Corten steel retaining wall with artwork

# The New and Improved Entrances

## Entrance No.2 Opposite Winchmore School



Option - to replace fence with more permeable boundary using bollards



Existing view of eastern entrance opposite Winchmore School

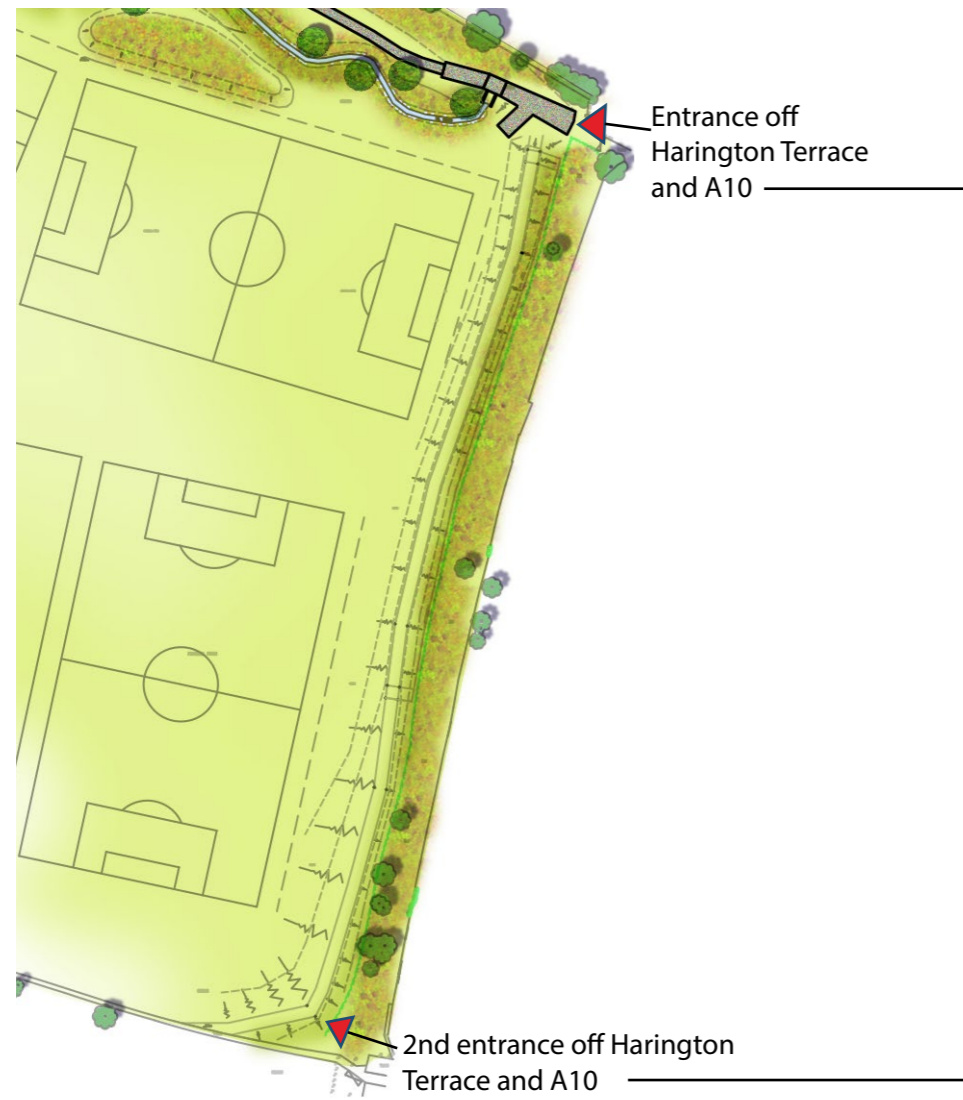
The existing entrance to Firs Farm is opposite Winchmore School, it could benefit from shifting slightly south to encourage school children to use the zebra crossing. Placing a new entrance in this location also links well with the new woodland walk whilst also connecting to the main wetland site.

Currently this area requires some opening up to improve immediate views into the Park. The proposal shown opposite suggests removing an Ash tree and a Hawthorn on the boundary to improve sight lines and make a safe attractive entrance.



Proposed view of eastern entrance opposite Winchmore School using feature bollards and new pathways

# The New and Improved Entrances Eastern Entrances from Harington Terrace



Entrance off Harington Terrace and A10



Existing view of eastern entrance No.1



Existing view of eastern entrance No.1



Proposed view of eastern entrance No.1

Improve the north eastern entrance by opening it up, utilising some Parks owned land adjacent and reconfigure the boundaries, new railings and decorative bollards secure the site, one or two of which could be collapsible to allow maintenance vehicle access. Explore possibility of bollarding the access road further back to prevent fly tipping in front of Park entrance.



Existing view of eastern entrance No.2



Existing view of eastern entrance No.2

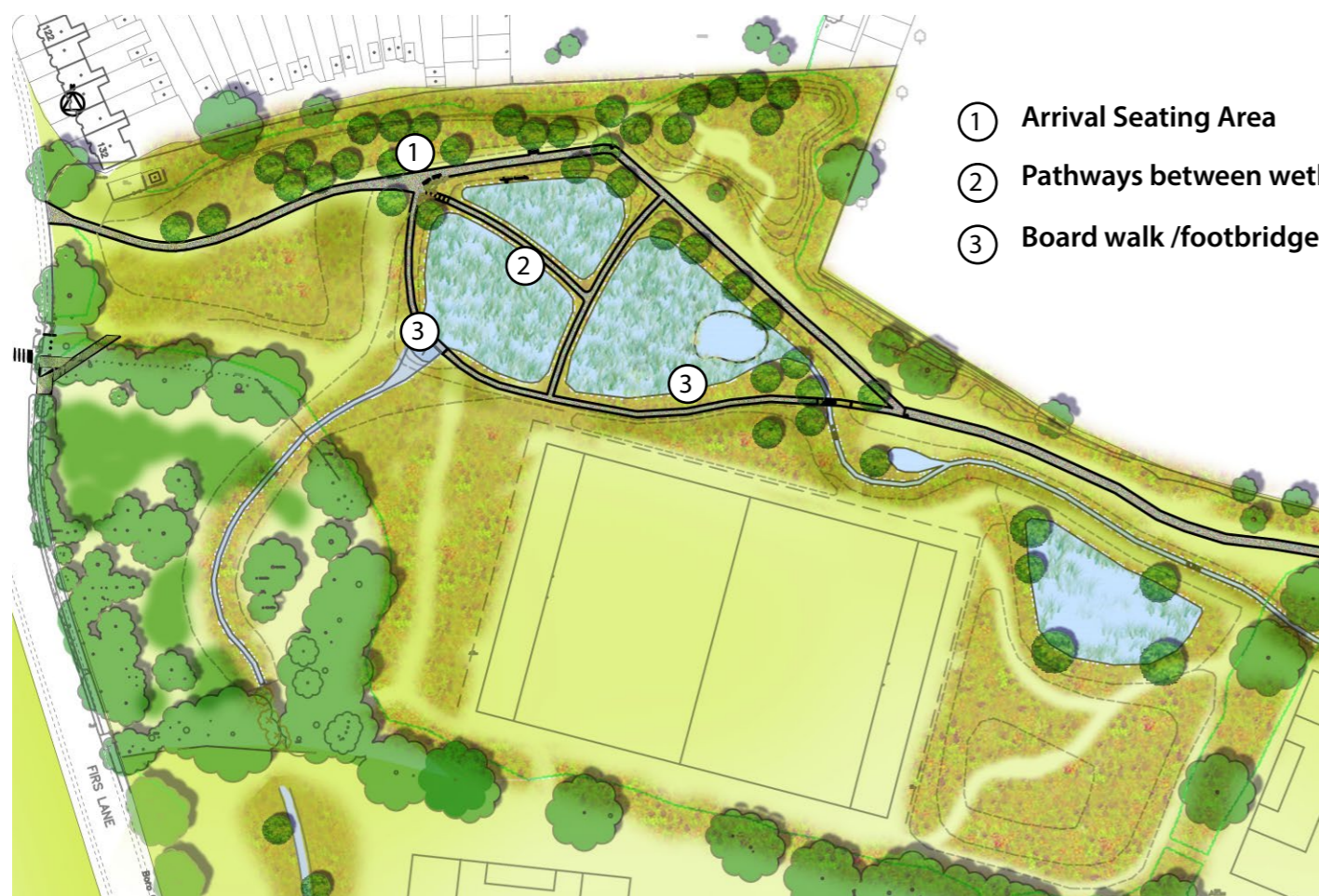


Proposed view of eastern entrance No.2



Proposed view of eastern entrance No.2

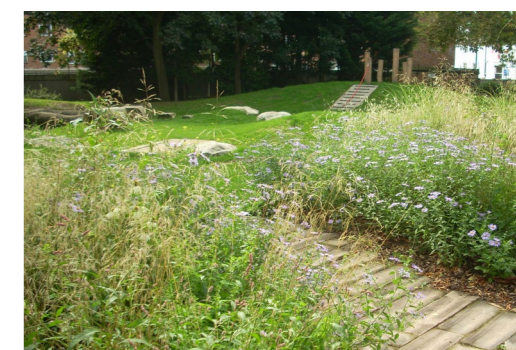
# The Wetlands



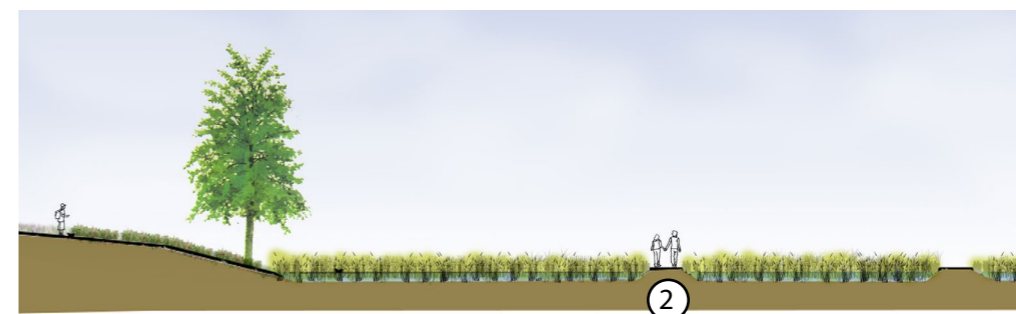
- ① Arrival Seating Area
- ② Pathways between wetland cells
- ③ Board walk / footbridge



**Tottenham Marshes**  
A typical seating areas at Tottenham Marshes with resin bound gravel surface and granite sett edging. Mown grass paths define routes through the naturalised grasslands



**Grove Road Open Space**  
A scheme we designed for a pocket park in New Southgate using concrete paving which resembles wood running through planting beds into a natural play area



Footpaths across the wetlands will create interesting routes through the wetland cells



① Arrival seating area. This is a space we made for a pocket park at Painters Lane in North Enfield using a bespoke seating wall feature.



① Signage to help explain the wetlands and new habitats.



② Weirs between the different wetland cells create opportunities for attractive natural features.



③ Board walk options in and around the wetlands.

## Additional Features around the Wetlands



- ④ Potential location for a board walk which takes people up to the edge of the wetland with a wildlife hide feature (definitely no roof but a simple set of upright posts forming windows onto the wetlands)
- ⑤ Possible locations for informal playable landscape area using robust materials to create opportunities for balancing, climbing and sliding. This will not be a traditional play area but instead an informal space made of landscape features

### Informal playable landscape area



⑤ *A boulder scrubbling mound*



⑤ *A stainless steel embankment slide*

### Open air wildlife/bird hide



④ *An open wildlife/bird hide made of chunky timber sleepers offering 'windows' at various heights to view the wetland cells whilst being a sculptural feature in keeping with the site design*



④ *A board walk along a section of the wetlands*



⑤ *Landscape features used at Painters Lane Pocket Park in Enfield to create an informal natural playable space using robust and interesting materials*



## The Watercourses and Boundary



Potential location for additional watercourse to feed the wetland cells

Potential location for small visitor/community centre. Existing changing room facilities/services can be utilised

## Proposed Footbridge



Example of a type of footbridge used in the borough



Example of locations where extra planting to the boundary could be used to screen views into Edmonton Cemetery



Impression of additional watercourse



Example of a volunteer run wetland community facility in Langford



Example of a potential wetland community facility, a shipping container renovated with green roof

## Outline Planting Palette

### Typical Tree planting in and around the wetland cells



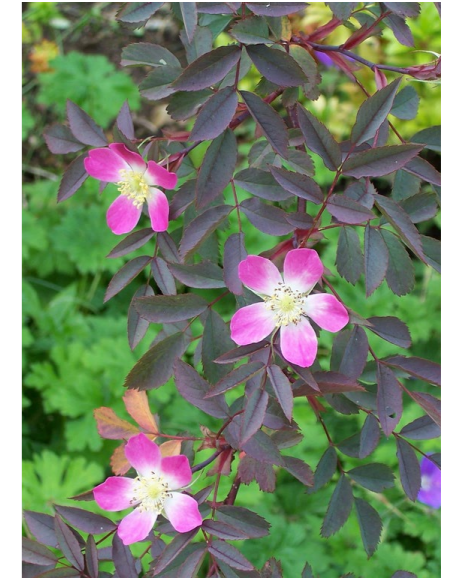
Species to include *Prunus padus* (Bird Cherry)



*Betula pendula* (Silver birch)

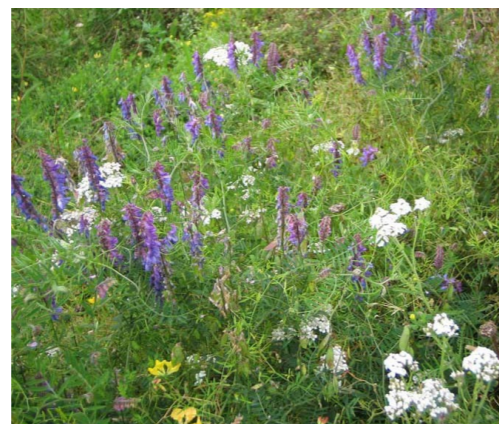


*Alnus glutinosa* (Alder)



Buffer planting to help screen Edmonton Cemetery Tall native hedgerow - typical species *Crataegus monogyna* (hawthorn) and *Prunus spinosa* (blackthorn) *Rosa glauca* (red-leaved rose)

### Marginal planting to support waterway remediation



Typical species: *Filipendula ulmaria* (meadow sweet) and *Hemerocallis lilioasphodelus* (yellow daylily)

### Sowing seed and maintenance of landform areas



A combination of wildflower and grass meadow seed sowing along with ongoing maintenance can create naturalised or semi-natural grassland habitat. In autumn a large bulb planting exercise could also take place

## Firs Farm Wetlands - Outline Materials Palette



**Paved surfaces -  
Main Pedestrian and  
cycle path**  
*Proposed material:  
Asphalt (Tarmac)*



**Paved surfaces**  
*Exposed aggregate concrete footpaths are  
durable and give a buff coloured finish*



**Paving detail**  
*Woodstone (Concrete pavers with  
timber decking effect) Could be used as  
feature paving*



**Feature fencing type**  
*Timber is shown here but this could be  
shapes cut out of Corten steel to represent  
the wetland reeds*



**Entrance Bollard type Options**  
*Left: Hardwood timber bollard  
Right: Tapered ductile iron bollard*



**Cambourne bench**  
*Steel frame with recycled plastic slats*



**Ideas for picnic furniture - Steel framed  
robust picnic tables potentially around  
an informal playable landscape area.  
Wheelchair access from far side.**



**Ideas for litter bins Steel bins or recycled  
plastic**



**Community artwork**  
*Various features present opportunities for communi-  
ty artwork particularly with Friends groups and local  
schools*

# Firs Farm Wetland Benefits



Grey Heron

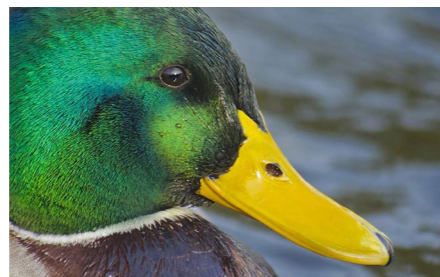


Amphibians

The new wetlands and grassland habitat along with increased tree planting has the potential to drastically increase the range of animals who visit or live at Firs Farm. In addition the new amenity can offer the local community educational opportunities and the pleasures of a closer connection to the natural world.



Barn Owl



Insects



Educational resource for community events



Using brass rubbings to form a trail



Exercise and leisure

