

**PALMERS GREEN TRIANGLE**  
**Aldermans Hill junction with Green Lanes**



## Introduction

On 4<sup>th</sup> October 2010 the mature tree positioned in Palmers Green Triangle, Aldermans Hill junction with Green Lanes N.13 was felled following identification that it was in an advanced state of decline and was fast becoming structurally unsound. Since then it had been the sole intention of Highway Services, Enfield Council to plant a mature specimen as replacement.

Unfortunately this hasn't been possible due to other elements of work needing discussion, coordination, approval & funding. These are, in no particular order:

- Future and structural integrity of the subterranean toilet block.
- Residents Priority Fund Application – Clock Tower.
- Residents Priority Fund Application – Raised Beds / Planters
- Statutory Undertaker's plant location / diversions.
- Street Furniture rationalisation.
- Conservation features re use (railings around toilet block).
- CCTV.
- Street Lighting.
- TfL Traffic Signals.

There is a wider Palmers Green Streetscape Improvements Study that has highlighted and provided design for a whole area improvement. This is awaiting approval / funding, and it has been determined that this project will not progress in the short term.

The purpose of this note is to provide information relating to the minor improvements works that we hope to carry out in the short term to improve the Environment. These are:

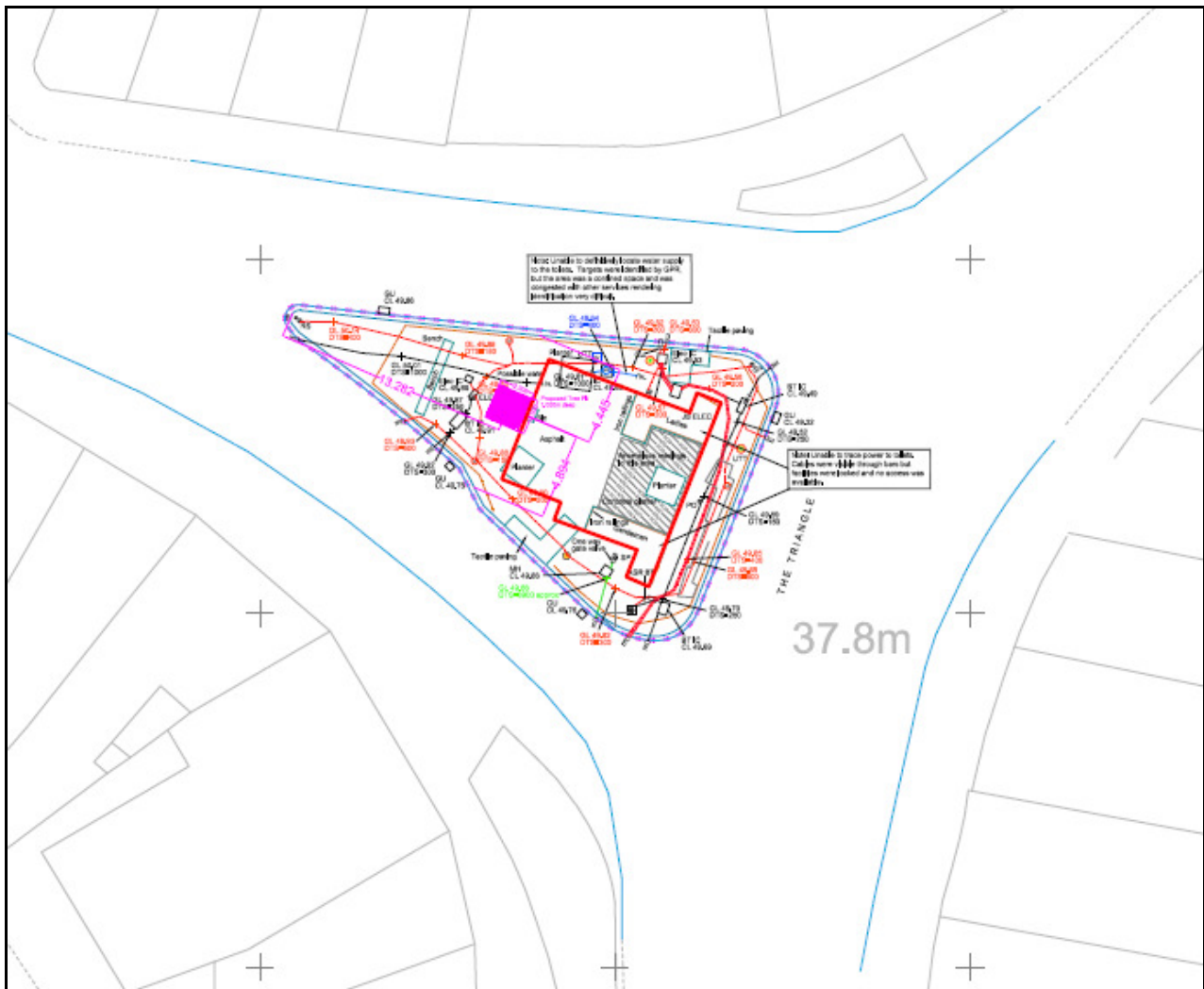
- Toilet Block Decommission and removal of above ground features.
- Street Furniture rationalisation / renewal.
- Relocation of Christmas Tree base.
- Provision of a Focal Clock.
- Improvement and ongoing maintenance of the raised planted beds.



## Toilet Block

The work is to include for the capping off the services and making safe, removing the railings and kerbs around the toilets and putting an rc slab on top of each staircase opening. The architecturally important railings are to be retained and stored in a safe place until such time, when they will be refurbished and re used in a suitable position.

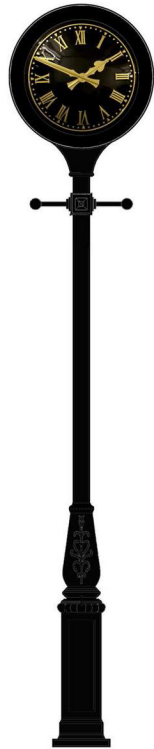
The below drawing extract highlights the toilet block perimeter flank walls in red and shows all present utilities.



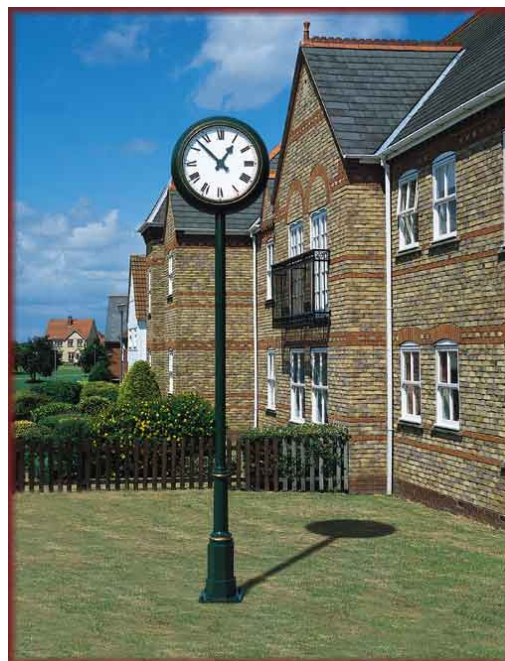
## Clock Tower – Residents Priority Fund Application

The position, design and future maintenance of the Clock Tower would need to be consulted on, although, the presence of the existing utilities would dictate most options.

Find below some options for the style of clock



As Time Goes By



Hawkins Clock Co.



Good Directions

## Street Furniture

The elements of street furniture needing renewal are as follows:

**Planters** – The existing concrete planters on The Triangle are to be removed.

**Raised Beds (on the approaches to The Triangle)** – There is a current ERPF application requesting funds for the clearance, planting and ongoing maintenance for a 3 year period. There is a need for the applicant to be in consultation with the Highway Services Grounds Maintenance Team to ensure coordination and agreement of design / specification.

### **Bench Seats**

The existing bench seat will be replaced with 3no. benches conforming with the current policy standard.an alternative position on the island. The new benches will be positioned in such a way to maximise the space on The Triangle.



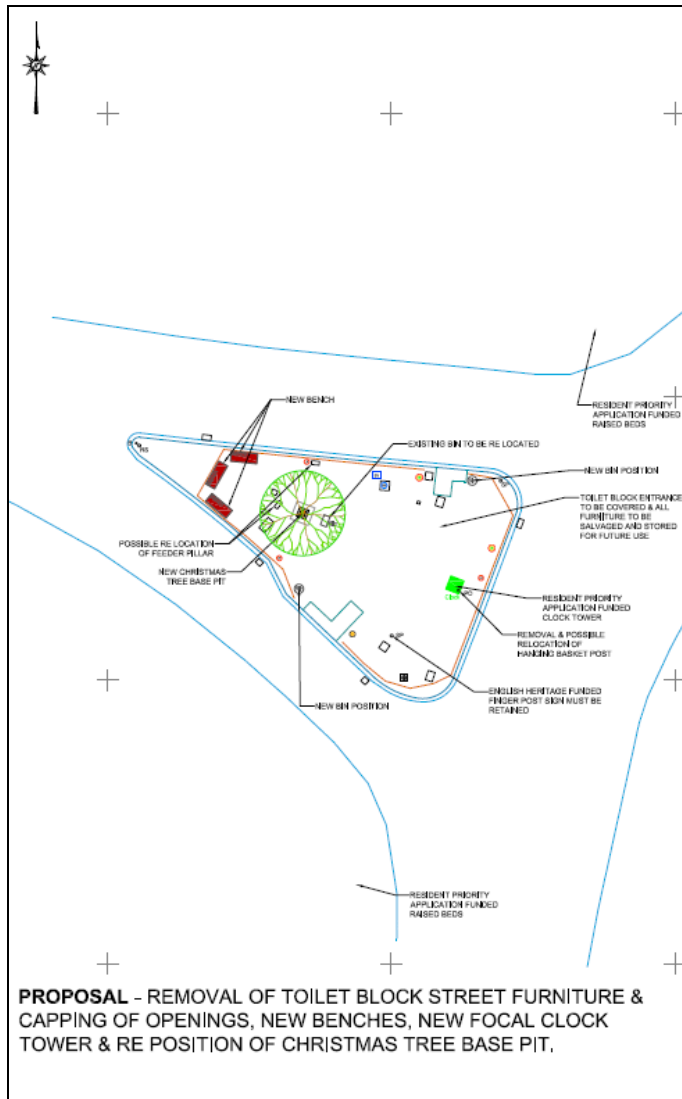
### **Litter Bin**

The existing litter bin will be relocated, with an intention of provided an extra facility

Other elements of Street Furniture that cannot or should not be renewed or moved are:

- CCTV.
- Pedestrian Railings around Island – This is being looked into in terms of safety.
- English Heritage Funded Finger Post Sign.

Below is an overhead photograph of The Triangle and an extract of a drawing highlighting the proposals



# Google Map Views for reference

